


SEE INSIDE
THE FUTURE

920 CT





920 CT

Rapiscan
systems

powered by analogic

We believe in a future that is safe for everyone, which is why at Rapiscan® Systems we are committed to providing the best possible solutions to meet your needs.

As a leader in security screening we are proud to introduce the 920CT.

The 920CT is designed to advance aviation cabin baggage screening into the future. It improves passenger experience while increasing their safety.

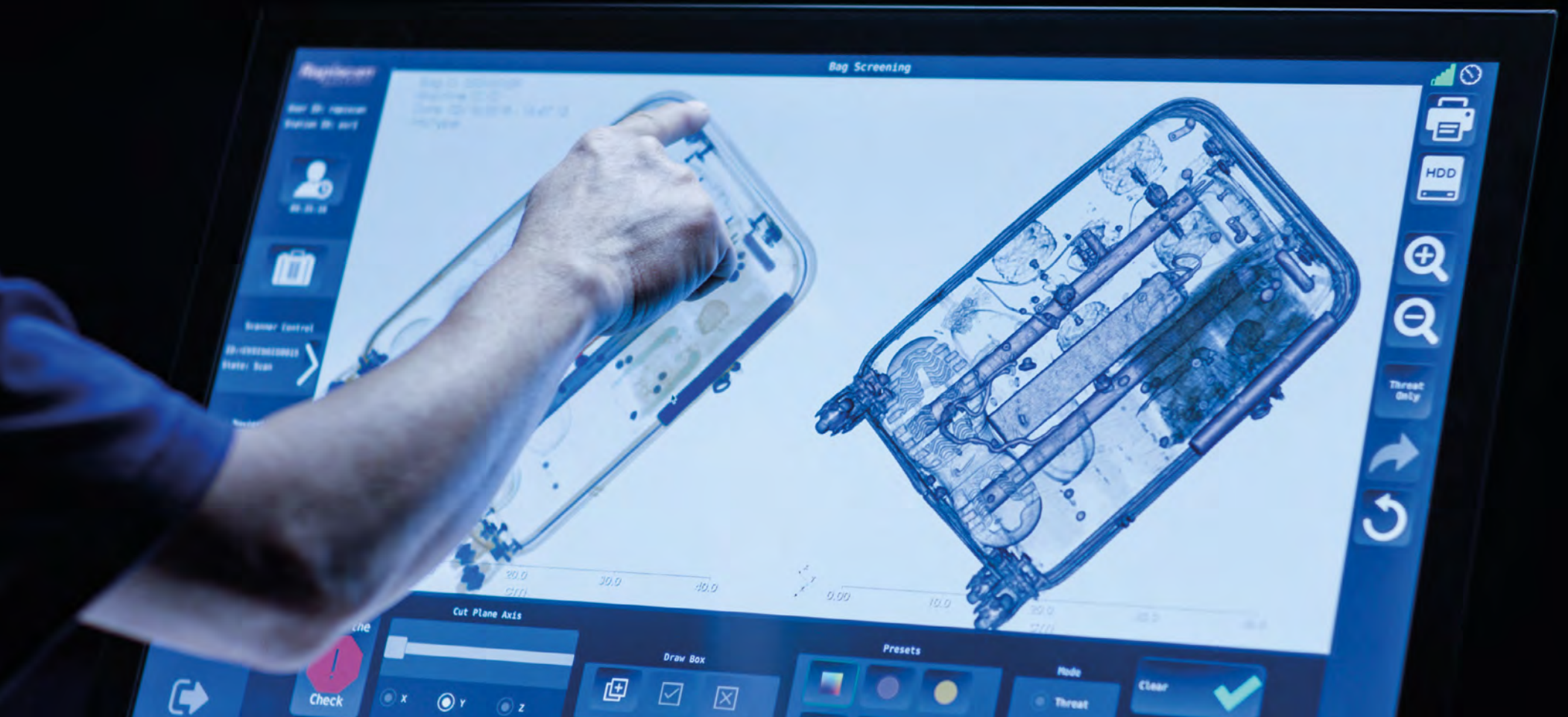


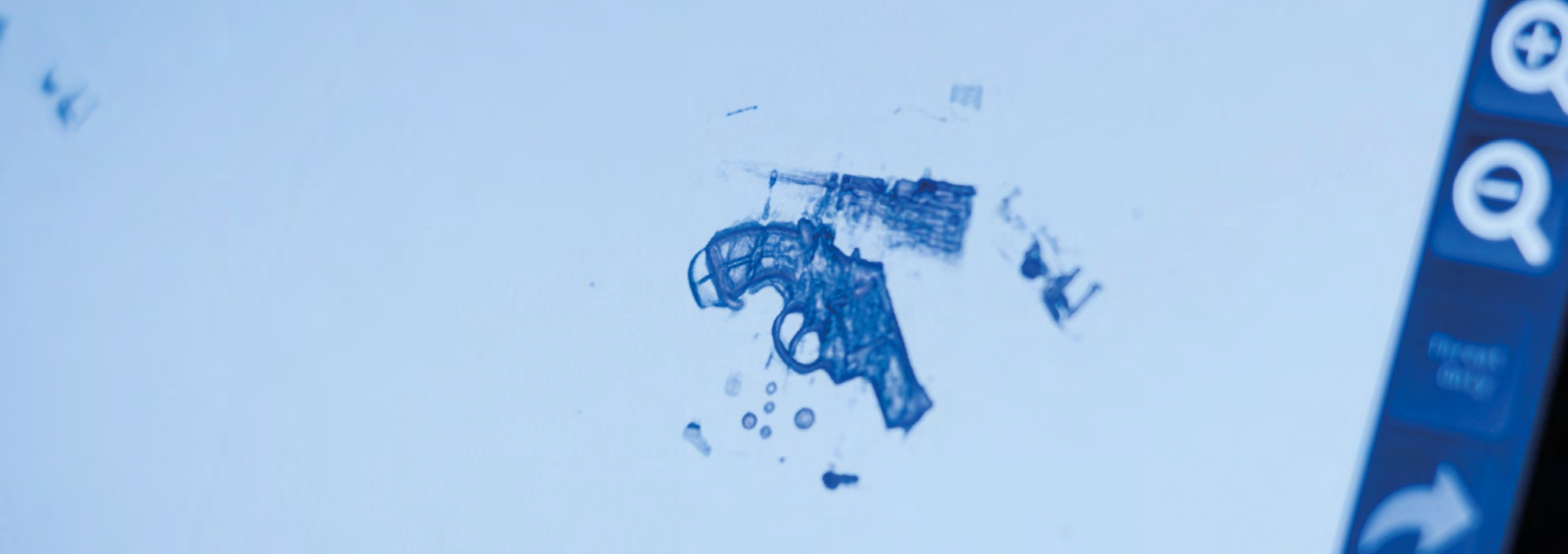
MAL MAGINNIS
PRESIDENT, RAPISCAN SYSTEMS

INTELLIGENT SCREENING

920CT is intelligent. It can detect threats quickly and make decisions based on what it sees. Its intuitive and simple-to-use touch screen paired with its 360-degree image view, makes inspection easier and faster.

It provides the highest resolution 3D image allowing the highest degree of On Screen Inspection and Resolution (OSIR) for the operator reducing the need to open and manually search bags for both explosives and other contraband.





BEAUTY & BRAINS

With ever-increasing global threats and new regulations being introduced, the 920CT gives you state of the art technology designed to meet the strictest of current and future regulations all within a contemporary design.

920CT utilizes cutting-edge Dual-Energy technology and sophisticated algorithms to provide the highest level of automatic detection of explosives and the detection of densely shielded areas meeting stringent global standards.

The software and detection algorithms have been designed to be easily upgraded in the future to meet new standards and requirements as they are developed.



920 CT

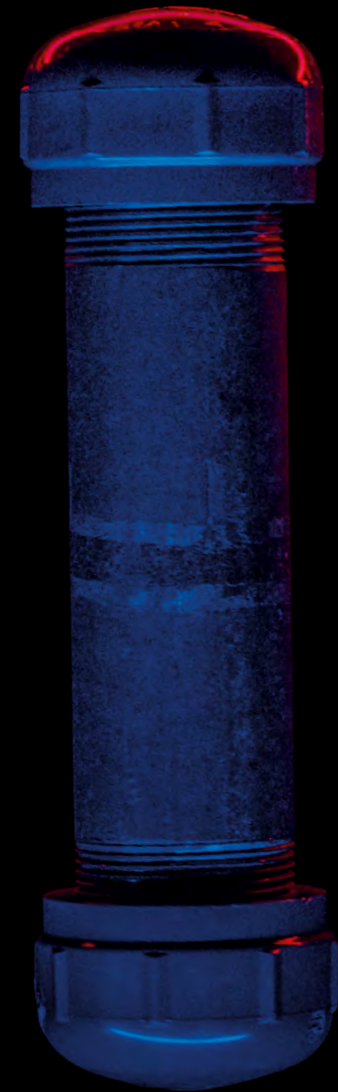
Rapiscan
systems

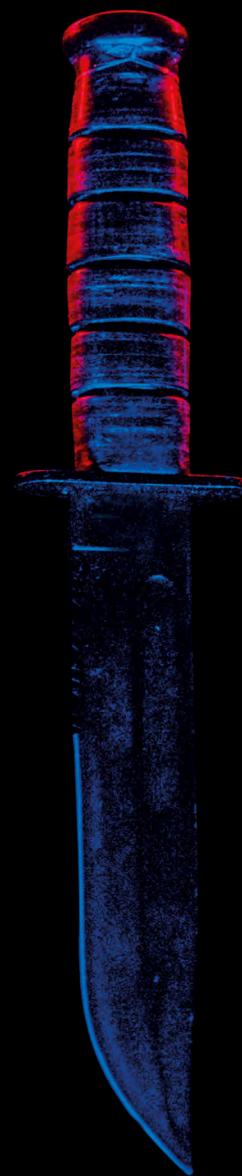
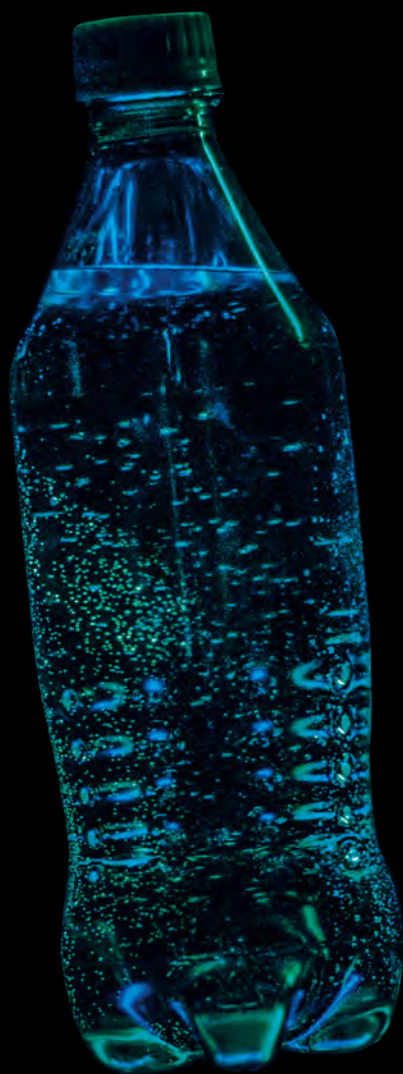
An OSI Systems Company

STAY IN THE BAG

Our system causes less stress for passengers as they will be able to leave their large electronics and ultimately their liquids in the bag, meaning they spend less time at the checkpoint and more time utilizing the rest of the airport.

The system architecture is based on proven medical Computed Tomography (CT) technology that resolves today's and tomorrow's challenges facing regulators and airports.



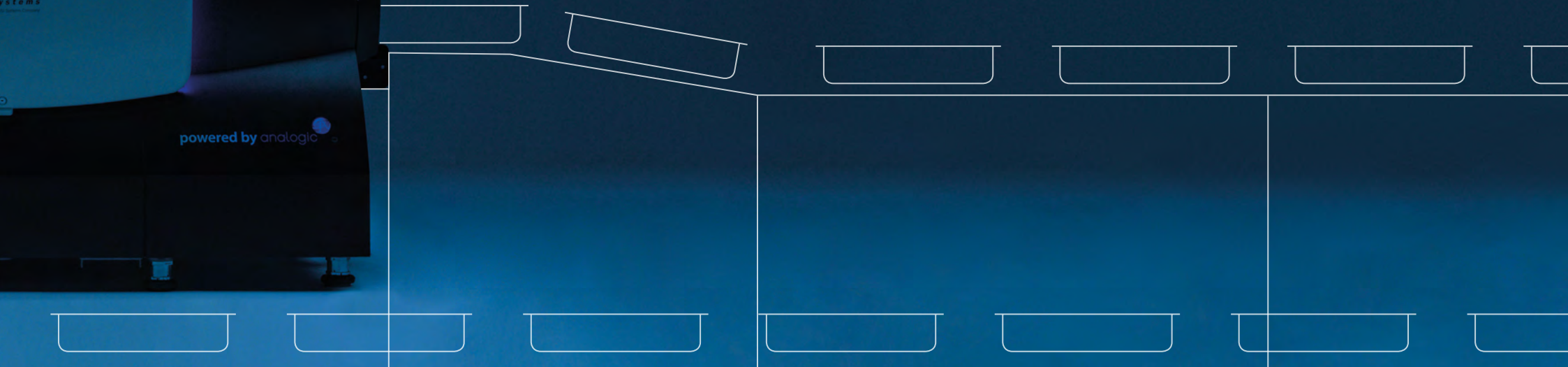


THE PERFECT COUPLE

920CT can easily integrate with Rapiscan Systems security checkpoint Tray Return System (TRS™). The harmonious combination of 920CT and TRS creates a seamless experience for airports by strengthening security, increasing passenger throughput and staff efficiency. In conjunction with

an optimal layout it provides the best passenger experience, therefore keeping the checkpoint flowing quickly and efficiently. It is a proven design for maximum passenger throughput with the lowest number of rejected passenger bags.





GLOBAL PEACE OF MIND

With our experienced customer service team, that reaches every corner of the globe, you can be confident your project runs smoothly from design to installation and beyond to continued support.

The 920CT has a contactless gantry by using cutting-edge bearing free and inductive coupling technology. This offers friction-free, non-contact operation, alongside higher speeds, better reliability, and less noise resulting in reduced maintenance costs and higher operational availability.





AT RAPISCAN SYSTEMS WE LOOK TO THE FUTURE
WHICH IS WHY WE BELIEVE 920CT IS THE PERFECT
CHECKPOINT SCREENING SOLUTION FOR TODAY
AND TOMORROW

TECHNICAL SPECIFICATIONS

INDUSTRY LEADING FULL 3D IMAGE RESOLUTION

920CT's intuitive GUI design provides the highest On Screen Inspection and Resolution (OSIR) for image analysis of both automated alarms as well as other prohibited items

DENSITY THREAT ALARM

Alerts operators upon detection of highly dense objects to identify items that otherwise may be missed by an operator

FUTURE PROOF TECHNOLOGY

The software and detection algorithms have been designed to be easily upgraded in the future to meet new standards and requirements

COMPACT FOOTPRINT, AESTHETIC DESIGN

Creates a passenger-pleasing airport environment

3D THREAT IMAGE PROJECTION (TIP)

Based on the latest regulatory requirements

FULL INTEGRATION

Integrates with leading automated tray return and baggage handling systems including Rapiscan System TRS™

CONTACTLESS & BEARING FREE GANTRY CT

Eliminates bearings and slip rings wear increasing operational availability and reducing maintenance cost

INTUITIVE TOUCHSCREEN WORKSTATION

Proven intuitive interface for ease of use giving speed, accuracy and improved security

CUTTING-EDGE DUAL-ENERGY TECHNOLOGY

Provides unsurpassed automatic detection of explosives

MEETS THE MOST STRINGENT GLOBAL REGULATORY REQUIREMENTS

920CT is EU/ECAC C2 Approved (Pending ECAC ratification) and is under development for EU/ECAC C3

PHYSICAL SPECIFICATIONS

DIMENSIONS

L 2,690 mm / 105.9 in
W 1,440 mm / 59.7 in
H 1,750 mm / 68.9 in

TUNNEL SIZE

W 620 mm / 24.4 in
H 420 mm / 16.5 in

CONVEYOR SPEED 0.15 meters per second

CONVEYOR LOAD (MAX) 136 kg / 299.8 lbs.

CONVEYOR HEIGHT 836 mm / 32.9 in

APPROX WEIGHT 1990 Kg / 4,387 lbs.

POWER REQUIREMENT 208/230 VAC, 30 Amps

POWER CONSUMPTION 3000 Watts

X-RAY GENERATOR

ANODE VOLTAGE 160 kV

TUBE CURRENT 5 mA

ENVIRONMENTAL

STORAGE TEMPERATURE -7°C – 49°C

OPERATING TEMPERATURE 0°C – 40°C

RELATIVE HUMIDITY 10 to 90%, non-condensing

SOUND PRESSURE < 70dBA

HEALTH & SAFETY

Rapiscan Systems' 920CT complies with all applicable U.S. FDA and equivalent international regulatory agency requirements, contained in the cabinet X-ray radiation safety performance standard [21 CFR 1020.40] and the general performance standard [21 CFR Part 1010] as well as IEC standard 61010-2-091.

Rapiscan Systems baggage and parcel inspection systems radiation emission leakages are well below the required regulatory limits with less than 1 μ Sv/hr. at 10 cm from all surfaces of cabinet X-ray.

powered by  analogic

Rapiscan[®]
systems
An OSI Systems Company

920 CT

sales@rapiscansystems.com

www.rapiscansystems.com