

## CARGO AND VEHICLE INSPECTION

Turnkey System Built to Local Requirements

Highest Imaging Performance

Highest X-ray Penetration

Proven System Reliability



The **Rapiscan Eagle F9000 Series** is designed to meet the highest X-ray imaging requirements for cargo inspection. The powerful 9 MV linear accelerator source delivers a minimum of 425 mm of steel penetration. As a result, these systems can inspect the widest range of cargo, including densely-loaded trucks and containers, thereby eliminating the need for costly and time-consuming manual inspections. Trucks are automatically moved through a stationary X-ray beam on a cargo motion system. Rapiscan Systems proprietary detector technology creates high quality images, which are presented to multiple inspectors in the facility. Our easy-to-use Cargo Viewer software enables the inspectors to efficiently analyze the images and find undeclared cargo and hidden contraband, such as weapons, explosives and drugs. Built on-site to meet customer requirements, the **Rapiscan Eagle F9000 Series** products are turnkey systems with comprehensive capabilities for controlling and monitoring the flow of trucks through the facility, including check-in, X-ray inspection, manual inspection and check-out operations. **Rapiscan Eagle F9000 Series** systems have demonstrated high throughput, reliability and availability to meet inspection needs while maintaining the flow of cargo.

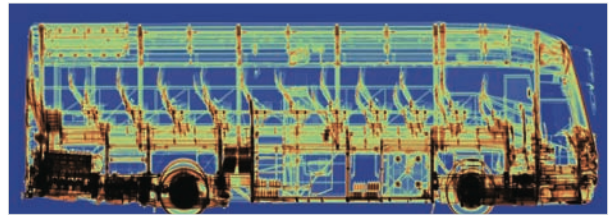
- 9 MV X-ray energy to inspect the widest range of cargoes
- 425 mm of steel penetration
- Highest quality X-ray imaging
- Turnkey system built to local requirements
- Capabilities for monitoring and controlling facility operations
- Multiple inspector stations to support high inspection throughput
- Built-in radiation safety that meets international and local standards
- Manufactured to US and CE certification standards
- Proven, reliable system with high availability

## CUSTOMER SUPPORT

Our team is dedicated to providing a prompt, effective and personalized response that exceeds your expectations. With spare parts inventory and skilled technicians all over the world, you can be certain Rapiscan Systems will always be prepared with a solution to address your requirements. By measuring response time, parts delivery and support status, our team embraces a customer focused philosophy to ensure continual improvement in customer support, products and services.



### CARGO AND VEHICLE INSPECTION



SPECIFICATIONS	
X-ray Energy	9 MV
Inspection Tunnel	5 m high x 5 m wide
Inspection Field of View	0.1 m to 4.6 m high x 3.5 m wide x 18 m long
Truck Weight	60 tons
Scan Speed	750 mm/sec
Penetration	425 mm of steel

290001-2

#### ISO 9001:2000 Certified

*With continual development of our products Rapiscan Systems reserves the right to amend specifications without notice.*

[www.rapiscansystems.com](http://www.rapiscansystems.com)

**AMERICAS, CANADA, CARIBBEAN**  
2805 Columbia Street  
Torrance, California 90503  
UNITED STATES of AMERICA  
Tel: +1 310-978-1457  
Fax: +1 310-349-2491  
**E-MAIL**  
sales@rapiscansystems.com

**EUROPE, AFRICA, MID EAST**  
X-Ray House  
Bonehurst Road  
Salfords  
Surrey RH1 5GG  
UNITED KINGDOM  
Tel: +44 (0) 870-7774301  
Fax: +44 (0) 870-7774302

**ASIA**  
240 Macpherson Road  
#06-04 Pines Industrial Building  
Singapore 348574  
SINGAPORE  
Tel: +65-6743-9913  
+65-6743-9892  
Fax: +65-6743-9915

**AUSTRALIA**  
Rapiscan House  
4 Ross Street  
South Melbourne Victoria  
Australia 3205  
AUSTRALIA  
Tel: +61 3 9929 4600  
Fax: +61 3 9929 4655

distributor stamp